

GLP 365

Materials

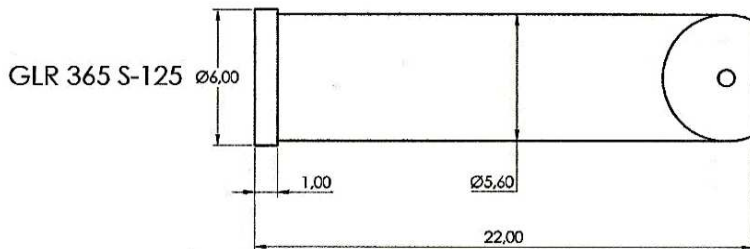
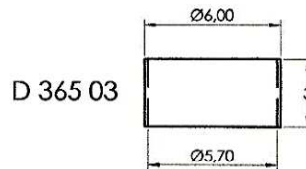
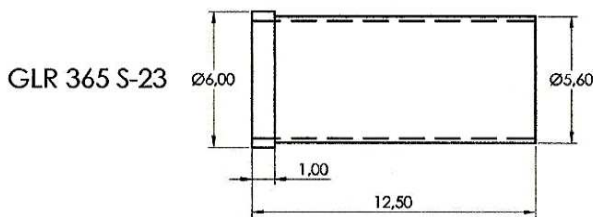
Barrel: Brass, Gold plated
 Spring: Music Wire, Silver o Gold plated
 Plunger: Steel or Hardened Beryllium copper,
 Gold over Hard Nickel

Technical Data

Recommended Minimum Centers: 6,50 mm
 Current Rating: 5,0-8,0 A
 Typical Contact Resistance: <30 mΩ
 Recommended Working Travel: 3,20 mm
 Max Travel: 4,00 mm
 Spring Force: 300g - 600g

Ø mm	4,00	4,00	4,00
Head			
Material	Br	S	S

Receptacle GLR 365



Drills: Ø 5,59 - 5,60

ORDERING EXAMPLE:

GLP 365	Br	4	400	300	G
Model	Material	Tip Style	Tip Diameter	Spring Force	Plating

Order info:
 Material Br=Brass G=Gold S=Steel
 Plating N=Nickel

GENTEC TEST
 ZA Les Sablons
 F 77230 Dammartin en Goële
 Tel: +33 1 60 27 07 76 / +33 1 60 03 91 91
 Fax: +33 1 60 03 91 70
 Web: www.gentec-test.com
 e-mail: sales@gentec-test.com

Dimensions in Millimeters
 Additional configurations on request - Specifications subject to change